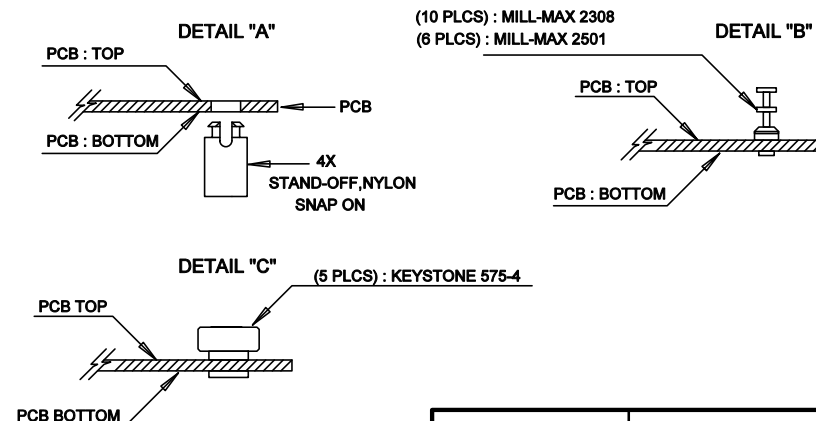
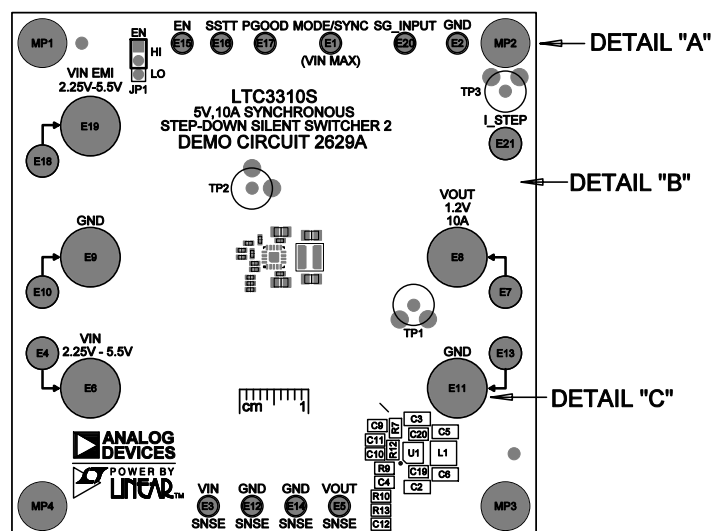




REVISION HISTORY				
ECO	REV	DESCRIPTION	APP. ENG.	DATE
-	05	PRODUCTION	MM	10-09-18

## NOTES: UNLESS OTHERWISE SPECIFIED

1. WORKMANSHIP SHALL BE IN ACCORDANCE WITH IPC-A-610.
2. ASSEMBLY REFLOW PROFILE SHALL BE IN ACCORDANCE WITH J-STD-020 WITH MAXIMUM SOLDER TEMPERATURE OF 250 DEGREES CELSIUS.
3. PARTS TO OMIT WILL BE SPECIFIED ON THE BILL OF MATERIALS  
LOCATIONS OF OMITTED PARTS SHALL BE FREE OF SOLDER.  
MASK THE SOLDER STENCIL WHERE SMT PARTS ARE OMITTED.
4. INSTALL SHUNTS AS SHOWN ON ASSY DRAWING.
5. DEPANELIZE BOARDS AFTER ASSEMBLY AND ROUTE-OUT THE BREAKOUT TABS ON FOUR SIDES OF THE BOARD EDGE.
6. APPLY ASSEMBLY STAMP OR QA STAMP TO BOTTOM OF BOARD (UNSHOWY AREA).
7. INSTALL TURRETS, STAND-OFFS AS SHOWN BELOW:
8. APPLY DEMO S/N AT AREA ON BOTTOM SIDE AS SHOWN ON SHEET 2.



APPROVALS		 <b>ANALOG DEVICES</b>		 <b>POWER BY LINEAR™</b>	
PCB DES	NC	FOR ADI CUSTOMER USE ONLY			
APP ENG	MM	TITLE: TOP ASSEMBLY DRAWING			
		5V, 10A SYNCHRONOUS STEP-DOWN SILENT SWITCHER 2			
		SIZE	IC NO.	LTC3310S	REV.
		N/A		DEMO CIRCUIT 2629A	05
SCALE = NONE					SHT 1 OF 1